

Installation & Technical Manual

July 2019
Revision 2.0



Introduction

General Information

Sky Angel is designed for use on roofing areas and raised platforms for access to areas of buildings and structures that are deemed unsafe to do so otherwise.

The Sky Angel System is not designed for use as an attachment point for fall protection PPE.

The equipment used should be stored in a safe manner and moved to the point of installation in line with the Manual Handling Regulations in the region of use.

Installation should only be carried out by a trained and competent installer with the permission of Bettersafe International or their appointed representatives. Appropriate safety measures must be taken to ensure the complete safety of all installation personnel.

All tools used must be in good working order and calibrated and tested where applicable.

Testing and Conformity

Sky Angel complies with the current standards and requirements:

- ACR[M]001:2014 Test For Non-Fragility of Large Element Roofing Assemblies

WARNING!

- This manual is invalid if any unauthorised alteration has occurred.
- Unauthorised use of this manual may lead to prosecution
- This manual was, to the best of our knowledge, correct at its date of issue.
- It is the user's responsibility to ensure that all subsequent authorised amendments are incorporated and that the manual is to the current issue status.
- A manual that is not to the latest issue status is invalid and must not be used.

Ordering System Components & Tools

General Information

System components

When components are required, please contact Bettersafe International quoting relevant part number from the list. Guidance is provided in the component explanatory notes.

Orders should be sent to orders@bettersafeinternational.com

Tools

Electric Drill

Box Cutter

IRIUS E420-PWR Driver Socket



Amendments

1. Bettersafe International reserve the right to continually update their range of products and manufacturing processes, in the interests of reliability, durability and performance
2. In this respect, this installation and servicing manual will need occasional updating. Bettersafe International shall issue all registered holders the relevant amendments.
3. If in any doubt regarding the current Issue Status of a manual, please contact Bettersafe International.

Installation

General Information

Foreword

The nature of the following text is instructional on the installation attachment of the Sky Angel System. Selection of structural anchorages is a function of the mounting structure material, potential system forces, and the environment. As such the selection must be made by the competent Engineer in charge of the system installation. A competent engineer is defined as: -

'A person who has a recognised Structural or Civil Engineering qualifications, and who has had adequate previous installation experience.'

Such an Engineer must have attended Bettersafe International training and be familiar with the Sky Angel System.

This manual does not automatically infer design approval to or for particular system configurations. This must be obtained from architectural or site authority as appropriate, before commencement of work.

Pre-requisite Installation requirements

Installation cannot take place until the following have been fully considered and completed.

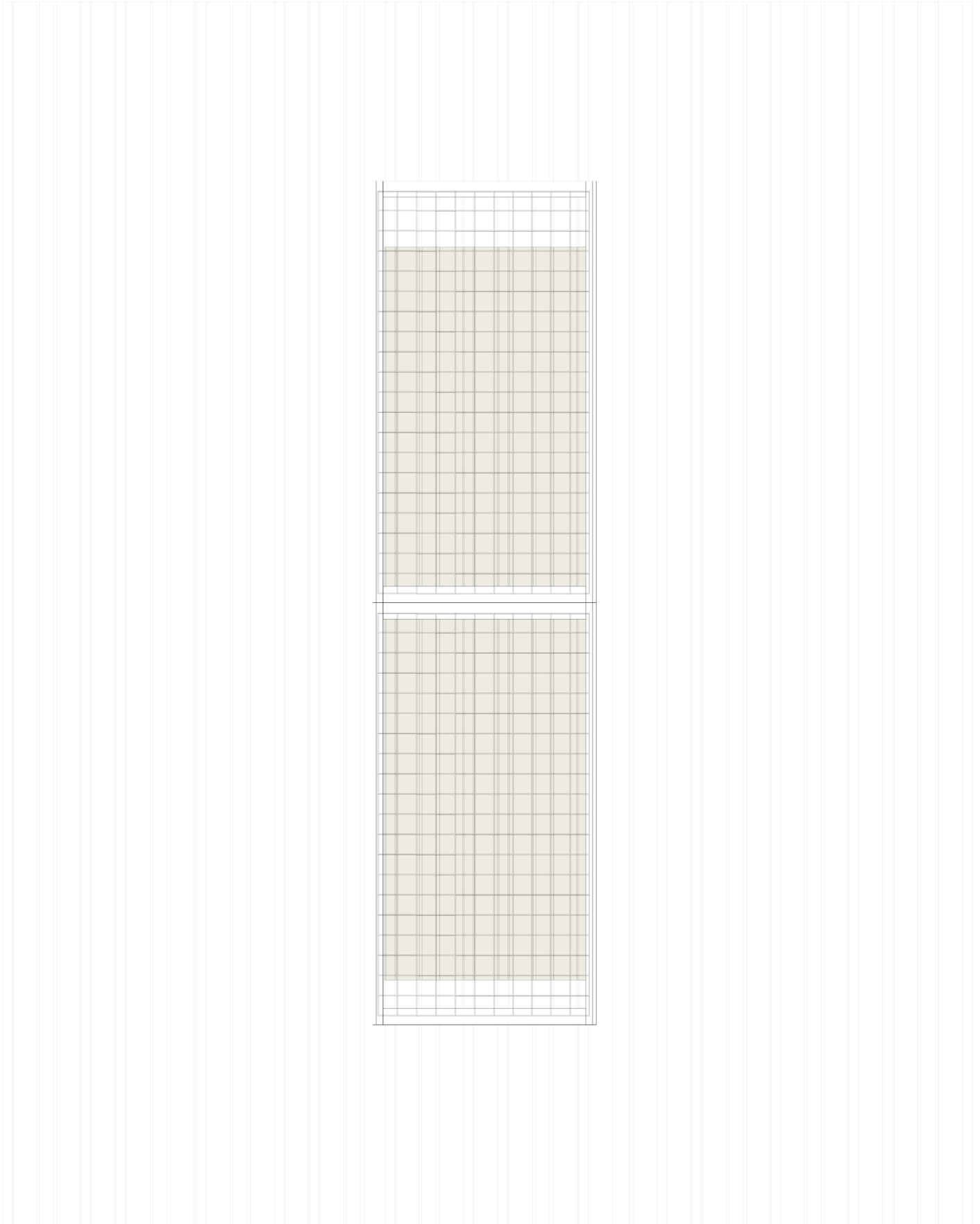
Site Plan

A site plan must be drawn up to indicate the Sky Angel System configuration, to include: -

- Extremities
- Entry / exit access points
- Roof surface angle
- Direction of Installation
- Obstacles.

Typical System Layout

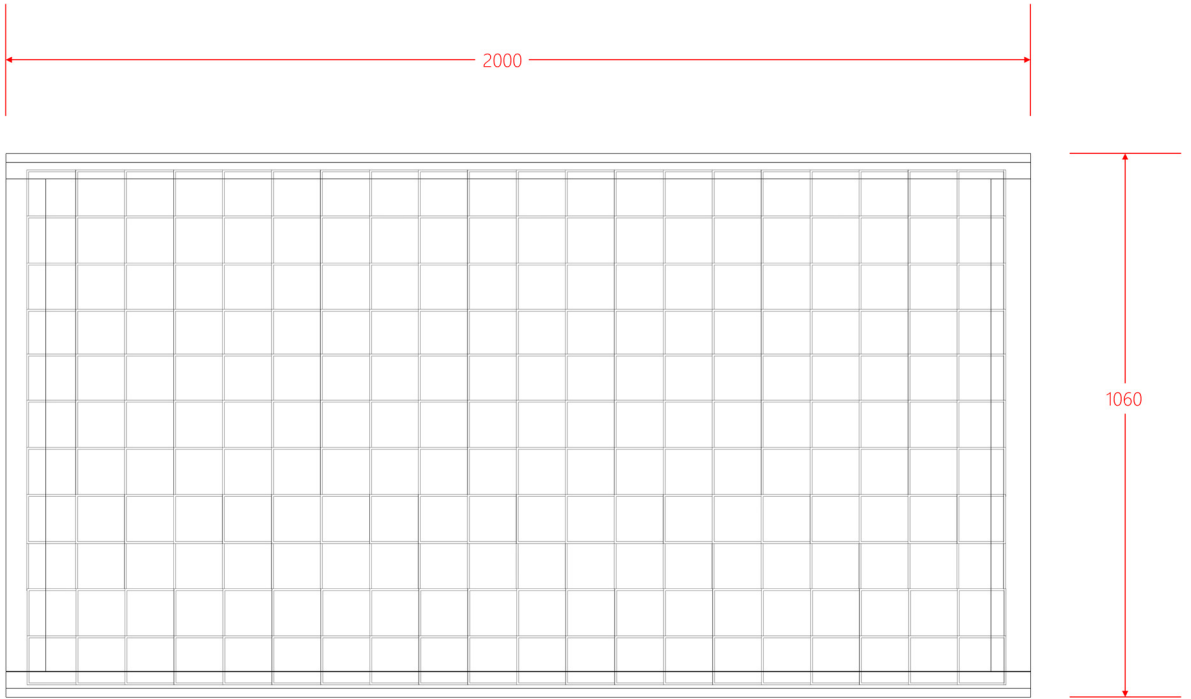
System outline



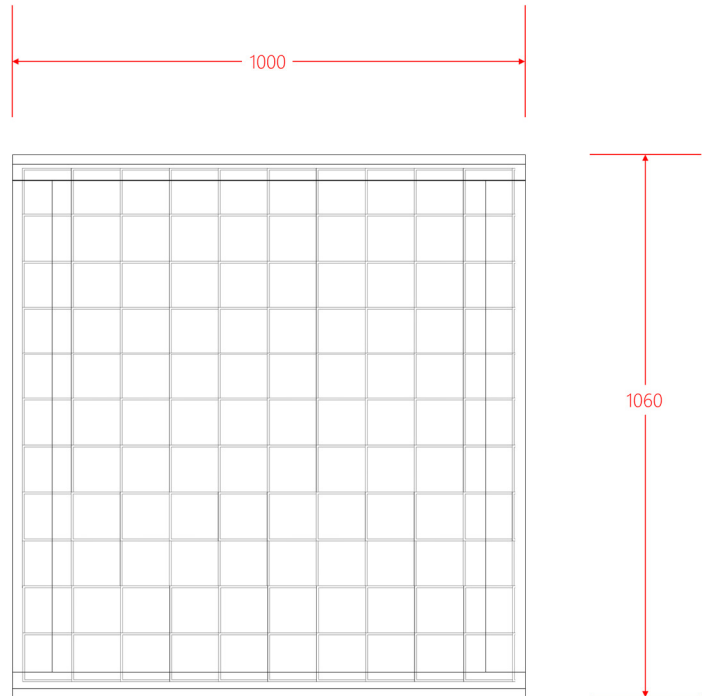
Dimensions

Standard Panels

SA-1001



SA-1001-1

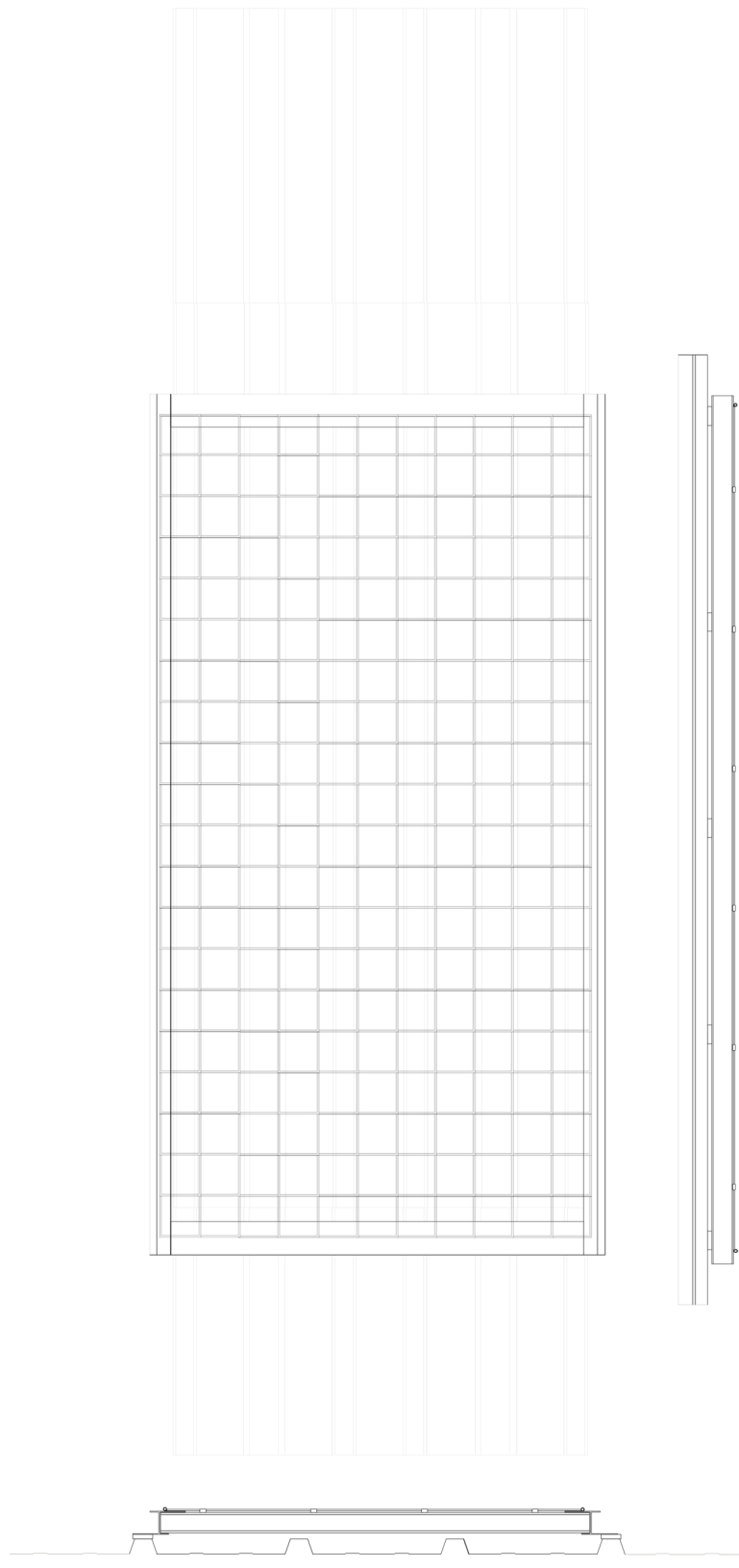
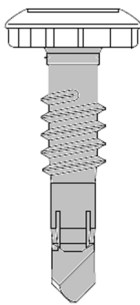


Installation

SA-1001

1. Place the Sky Angel on the raised pads across the skylight to be protected, with the offset beams running along the crowns of the sheet.
2. Ensure that the Sky Angel is at least the beam width past the end of the skylight at the lower end.
3. Fix the Sky Angel to the sheet using the SFS IRIUS Tek Screws. (5 per side)
4. Place the next Sky Angel (if required) above the first and repeat 1-3,

SFS IRIUS Tek Screw

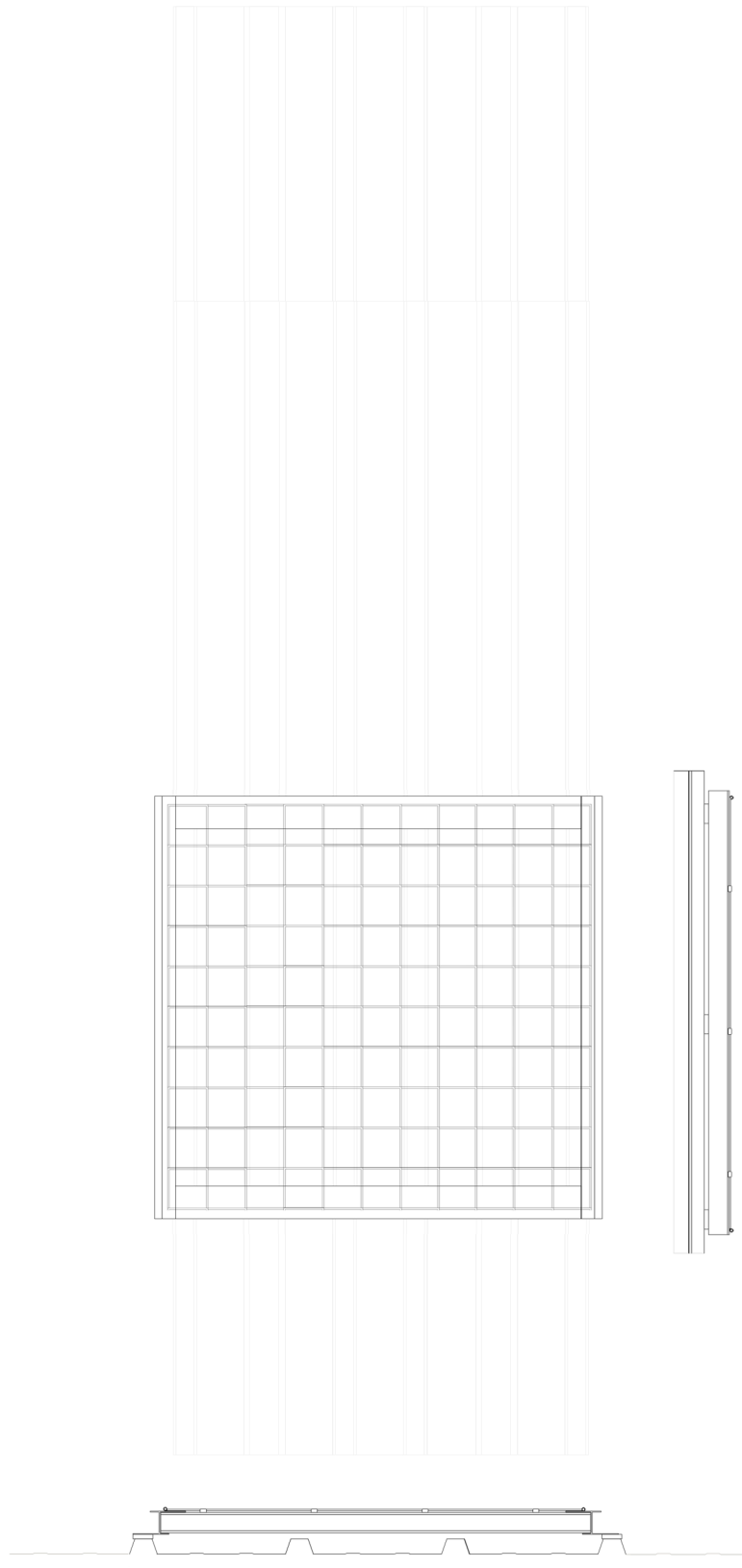
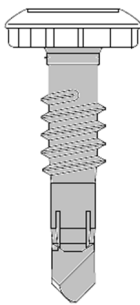


Installation

SA-1001-1

1. Place the Sky Angel on the raised pads across the skylight to be protected, with the offset beams running along the crowns of the sheet.
2. Ensure that the Sky Angel is at least the beam width past the end of the skylight at the lower end.
3. Fix the Sky Angel to the sheet using the SFS IRIUS Tek Screws. (5 per side)
4. Place the next Sky Angel (if required) above the first and repeat 1-3,

SFS IRIUS Tek Screw



System Maintenance

All Systems

- Periodic inspections by a competent person are recommended by the manufacturer. In UK/Europe these are required under Regulation 5 of the Workplace (Health, Safety & Welfare) Regulations, the Work at Height Regulations.
- The frequency will depend upon the environment, location and usage but should be at least every 12 months.
- Clients should ensure a maintenance schedule of periodic cleaning is in place. Suitable liquid cleaner and water should be applied with a stiff brush to remove debris..
- Walk and visually inspect the complete installed system in relation to the general client's needs.
- Establish if any modifications and/or additional products are required to reflect any refurbishment requirements or additional plant & equipment which have been installed and require access.
- Check installation configuration is complete as per the original installation drawing/plan.
- Ensure the system has not been modified or tampered with by unauthorised persons.
- Check all components are in place and not damaged in any way. If components are damaged then photograph and include in report for remedial works.
- Check all fastenings to ensure they are in place and sufficiently torqued.
- Where applicable, check fixings to walls/structures



NETHERLANDS
Azewijnseweg 12 SF
4214 KC
Vuren

UK
Riverside, Mountbatten Way
Congleton
Cheshire, CW12 1DY

t | + 31(0) 183 820 280

t | + 44 (0) 1260 217 437

info@bettersafeinternational.com
www.bettersafeinternational.com